

F2350RL.2-HXP TECHNO

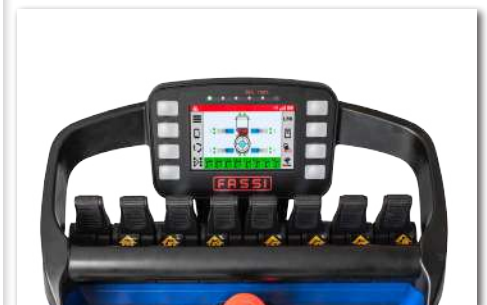
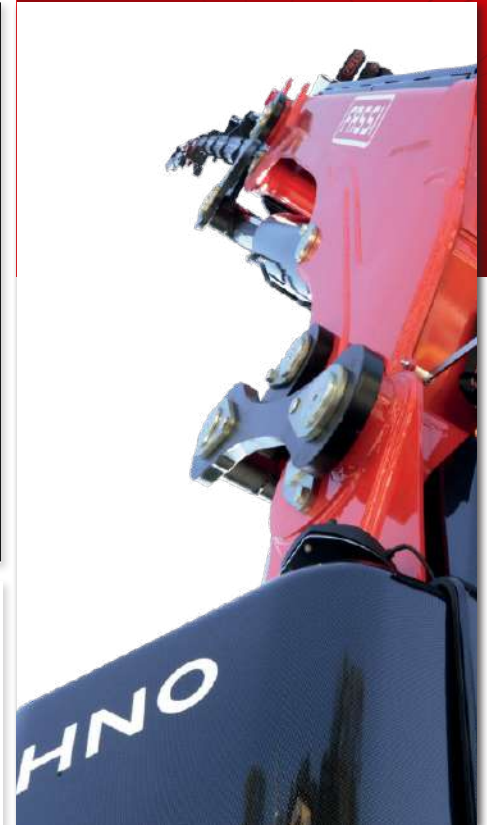
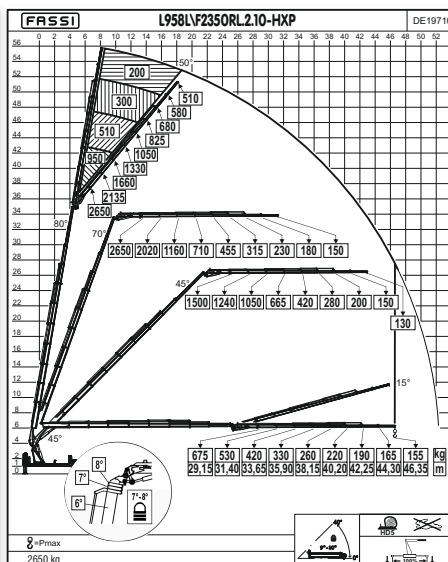
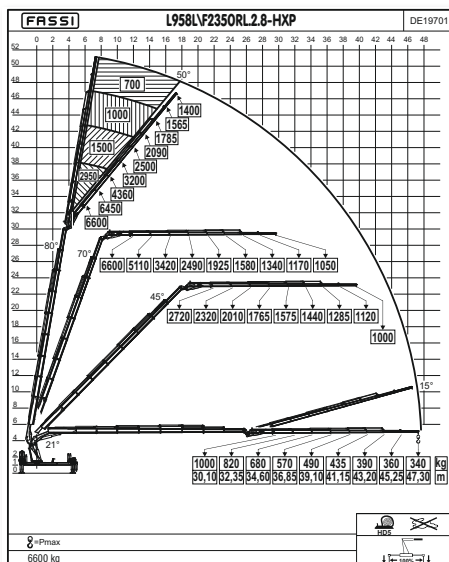
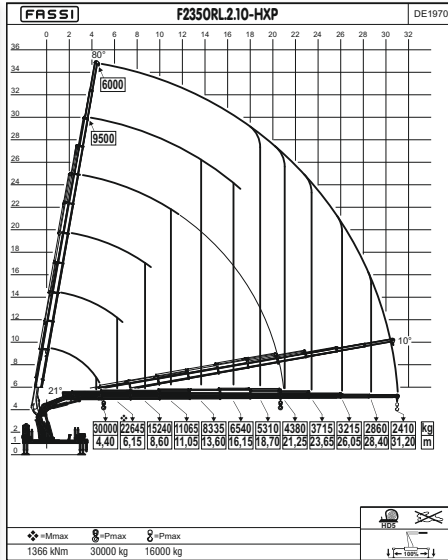
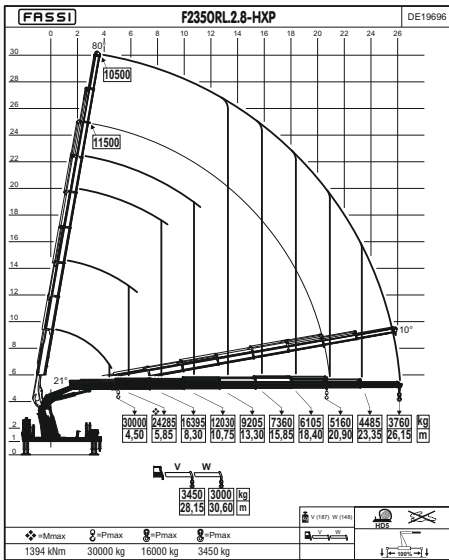
Temporary



F2350RL.2-HXP TECHNO



LEADER IN INNOVATION

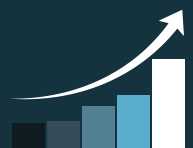


F2350RL.2.8	142,10	26,15	20,30	360°	130	35,5	100+100	500	16950	6000	2535	2900
F2350RL.2.10	139,30	31,20	25,05	360°	130	35,5	100+100	500	17850	6000	2535	2900
F2350RL.2.8 L958L	142,10	47,30	37,06	360°	130	35,5	100+100	500	19850	6000	2535	2900
F2350RL.2.10 L958L	139,30	46,35	41,76	360°	130	35,5	100+100	500	20500	6000	2535	2900

	Lifting capacity	Standard reach	Hydraulic extension	Rotation	Rotation torque	Working pressure	Pump capacity	Oil tank capacity	Crane weight	Crane width	Installation width	Crane height

X Design

PERFORMANCE + 50%



The decagonal section is characterised by increased mechanical performance, motion guides and the inertial stability of vertical loads. The result is that, in comparison to the hexagonal section, lighter solutions can be developed that offer the same mechanical performance, and higher mechanical performance can be achieved with the same weight.

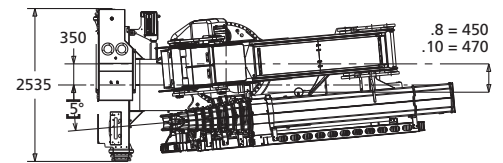
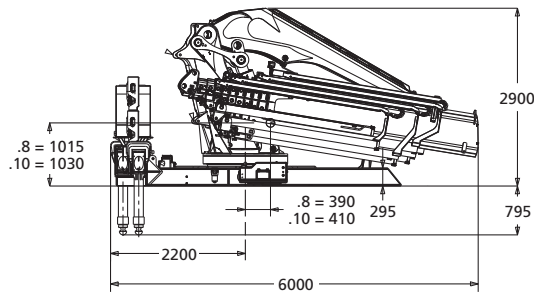
In fact is an increase in vertical performance of more than 50% has been achieved.

F2350RL.2-HXP TECHNO

- New lifting moment limiting device FX990
- Excellent power-to-weight ratio
- Stability control FSC TECHNO
- Customizable crane base
- Excellent hydraulic boom

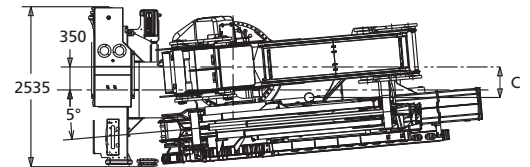
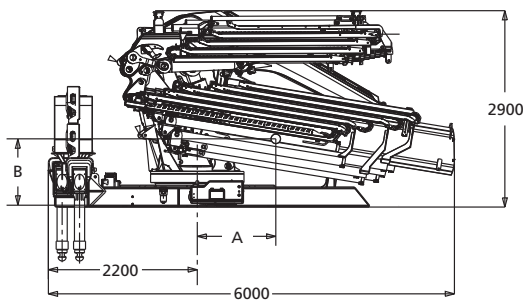
F2350RL-HXP TECHNO

SB
STANDARD BASE
BASAMENTO STANDARD
EMBASE STANDARD
STANDARD KRANSOCKEL
BASE ESTÁNDAR
STANDAARD BASISVERSIE



L SERIE

SB
STANDARD BASE
BASAMENTO STANDARD
EMBASE STANDARD
STANDARD KRANSOCKEL
BASE ESTÁNDAR
STANDAARD BASISVERSIE



F2350RL.2.8. SB	L956L	L957L	L958L
A	410	420	425
B	1150	1160	1170
C	500	505	510

F2350RL.2.10. SB	L956L	L957L	L958L
A	430	435	445
B	1160	1165	1175
C	515	520	520



TECHNO

The main feature of the new **FX990** unit is the significant increase in resources with **three CAN-BUS lines**; one dedicated to sensors, one to controls and one to vehicle connection. The latter relates to the importance of previous developments, from FX-Link to the DBF (Drive by Fassi) function for the remote control of the truck via the crane's V7 radio controller. In addition, **two Ethernet lines** further **extend connectivity and processing power**, another first.

Lifting Tomorrow



LEADER IN INNOVATION



FASSI GRU S.p.A.
Via Roma, 110
24021 Albino (Bergamo) ITALY
Tel +39 035 776400
Fax +39 035 755020
www.fassi.com
fassigr@fassigr.com

COMPANY WITH
MANAGEMENT SYSTEM
CERTIFIED BY DNV GL
= ISO 9001 =
= ISO 14001 =